



MODEL: IC-12V30-EP4S

Lithium Ion Deep Cycle Battery

ELECTRICAL SPECIFICATIONS

Nominal Voltage	12.8 V
Nominal Capacity	30 Ah
Capacity @ 25A	72 min
Energy	384 Wh
Resistance	≤50 mΩ @50% SOC
Efficiency	99%
Self Discharge	<4% per Month*
Maximum Modules in Series	4

DISCHARGE SPECIFICATIONS

Maximum Continuous Discharge Current	30 A@25°C
Peak Discharge Current	40A (3s)
BMS Discharge Current Cut-Off	70A (3s)
Recommended Low Voltage Cut-Off	11 V
BMS Discharge Voltage Cut-Off	10 V
Reconnect Voltage	11.2V
Short Circuit Protection	200-600 μs

TEMPERATURE SPECIFICATIONS

Discharge Temperature	-4 to 140°F (-20 to 60°)
Charge Temperature	-4 to 113°F (-20 to 45°C)
Storage Temperature	23 to 95°F (-5 to 35°C)
BMS High Temperature Cut-Off	149°F (65°C)
Reconnect Temperature	122°F (50°C)

MECHANICAL SPECIFICATIONS

Dimensions (Lx W x H)	6.5 x 7.7 x 7" 165 x 196 x 178 mm
Weight	11.7 lbs (5.3 kg)
Terminal Type	M6
Terminal Torque	80 - 100 in-lbs (9 - 11 N-m)
Case Material	ABS
Enclosure Protection	IP55
Cell Type - Chemistry	Prismatic- LiFePO ₄

CHARGE SPECIFICATIONS

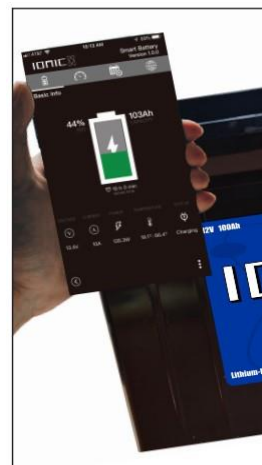
Recommended Charge Current	15A
Maximum Charge Current	30A@25°C
Recommended Charge Voltage	14.2 V - 14.6 V
BMS Charge Voltage Cut-Off	15.2 V
Reconnect Voltage	14.4 V

COMPLIANCE SPECIFICATIONS

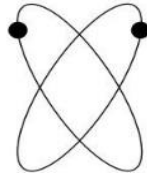
Certifications	CE (battery) UN38.3 (battery) UL1642 & IEC62133 (cells)
BCI Group Size	None

Feature

BlueTooth APP

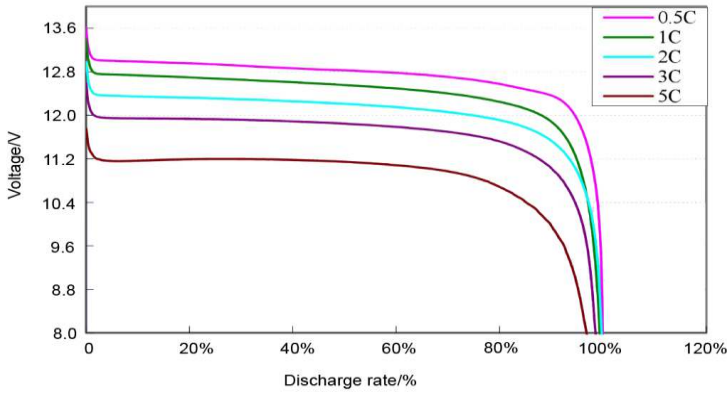


**Monitor your battery's
vitals straight from your
smartphone.**

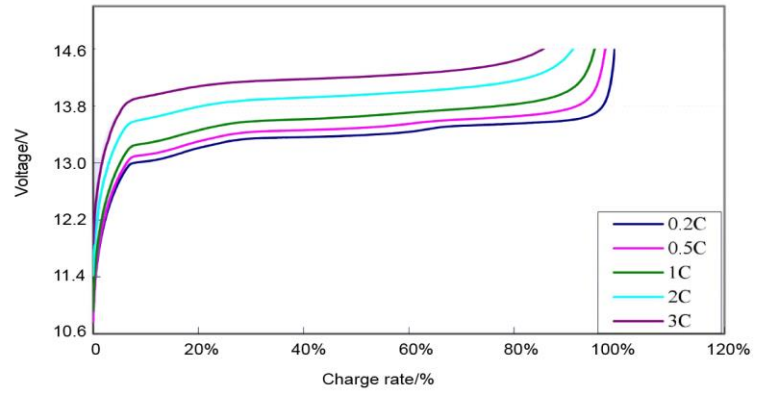


MODEL: IC-12V30-EP4S

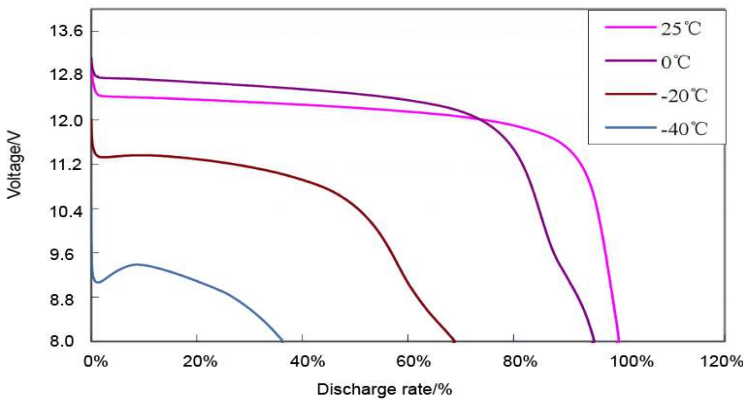
Discharge Characteristics at Various Discharge Rates



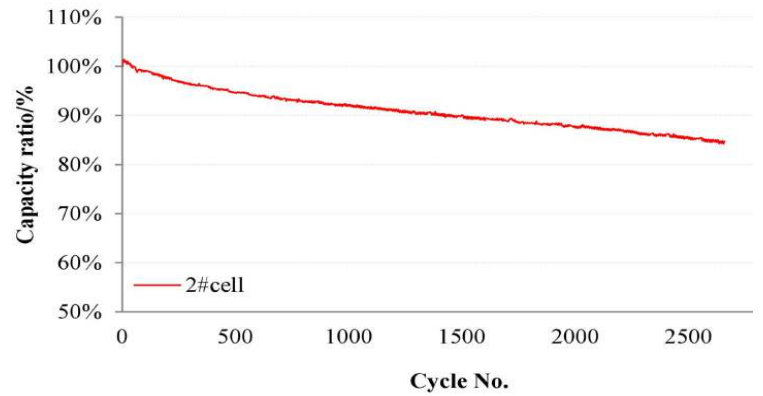
Charge Characteristics at Various Rates



Discharge characteristics at Different Temperatures



Cycle Life



Distributed by:



lithiumhub.com