



**MODEL: IC-12V100-EP4S**

## Lithium Ion Deep Cycle Battery

### ELECTRICAL SPECIFICATIONS

|                           |                 |
|---------------------------|-----------------|
| Nominal Voltage           | 12.8 V          |
| Nominal Capacity          | 100 Ah          |
| Capacity @ 25A            | 240 min         |
| Energy                    | 1280 Wh         |
| Resistance                | ≤30 mΩ @50% SOC |
| Efficiency                | 99%             |
| Self Discharge            | <3% per Month   |
| Maximum Modules in Series | 4               |

### DISCHARGE SPECIFICATIONS

|                                      |            |
|--------------------------------------|------------|
| Maximum Continuous Discharge Current | 100 A@25°C |
| Peak Discharge Current               | 350A (3s)  |
| BMS Discharge Current Cut-Off        | 350A (3s)  |
| Recommended Low Voltage Cut-Off      | 11 V       |
| BMS Discharge Voltage Cut-Off        | 10V        |
| Reconnect Voltage                    | 11.2 V     |
| Short Circuit Protection             | 200-600 μs |

### TEMPERATURE SPECIFICATIONS

|                              |                           |
|------------------------------|---------------------------|
| Discharge Temperature        | -4 to 140°F (-20 to 60°)  |
| Charge Temperature           | -4 to 113°F (-20 to 45°C) |
| Storage Temperature          | 23 to 95°F (-5 to 35°C)   |
| BMS High Temperature Cut-Off | 149°F (65°C)              |
| Reconnect Temperature        | 122°F (50°C)              |

### MECHANICAL SPECIFICATIONS

|                       |  |
|-----------------------|--|
| Dimensions (Lx W x H) | 12.55 x 6.5 x 9.2"<br>318 x 165 x 215 mm |
| Weight                | 28 lbs (12.7 kg)                         |
| Terminal Type         | 3/8-16 Threaded UNC                      |
| Terminal Torque       | 80 - 100 in-lbs (9 - 11 N-m)             |
| Case Material         | ABS                                      |
| Enclosure Protection  | IP55                                     |
| Cell Type - Chemistry | Prismatic- LiFePO <sub>4</sub>           |

### CHARGE SPECIFICATIONS

|                            |                 |
|----------------------------|-----------------|
| Recommended Charge Current | 50 A            |
| Maximum Charge Current     | 100 A@25°C      |
| Recommended Charge Voltage | 14.2 V - 14.6 V |
| BMS Charge Voltage Cut-Off | 15.2 V          |
| Reconnect Voltage          | 14.4 V          |

### COMPLIANCE SPECIFICATIONS

|                |   |
|----------------|---|
| Certifications | CE (battery)<br>UN38.3 (battery)<br>UL1642 & IEC62133 (cells) |
|----------------|---|

### FEATURES

Bluetooth APP

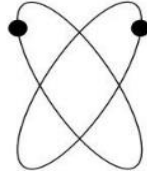


**Monitor your battery's vitals straight from your smartphone.**

Distributed by: 

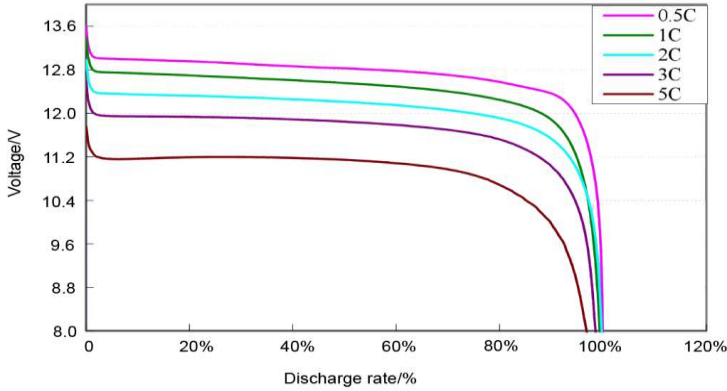
[lithiumhub.com](http://lithiumhub.com)

# IONIC Batteries

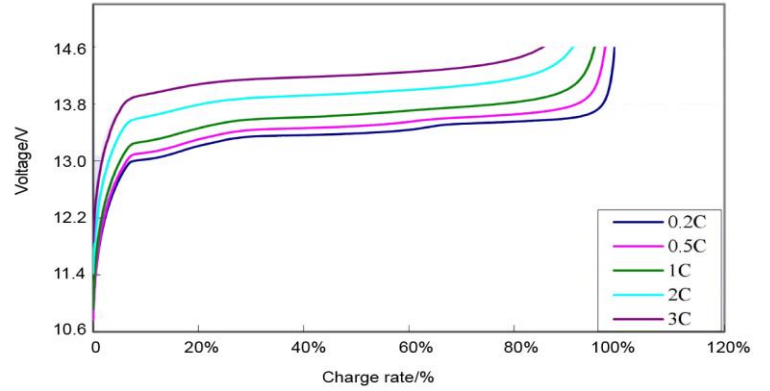


## MODEL: IC-12V100-EP4S

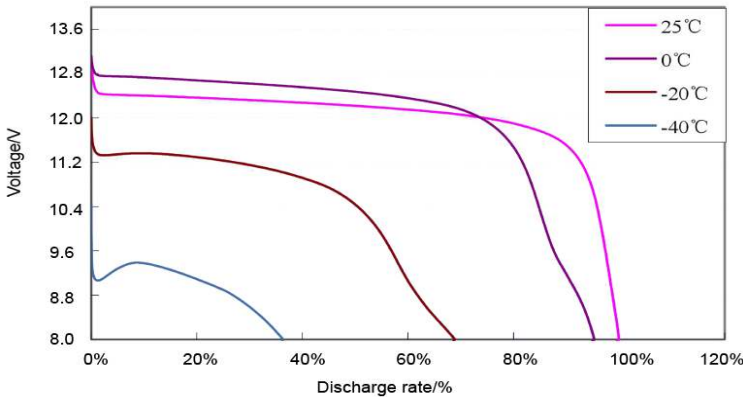
Discharge Characteristics at Various Discharge Rates



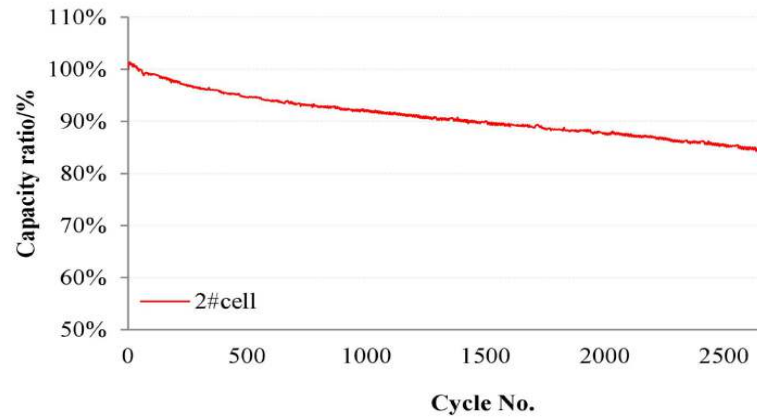
Charge Characteristics at Various Rates



Discharge characteristics at Different Temperatures



Cycle Life



Distributed by: LITHIUM HUB

[lithiumhub.com](http://lithiumhub.com)