



MODEL: IC-12V125-EP4S

Lithium Ion Deep Cycle Battery

ELECTRICAL SPECIFICATIONS

Nominal Voltage	12.8 V
Nominal Capacity	125 Ah
Capacity @ 25A	300 min
Energy	1600 Wh
Resistance	≤30 mΩ @50% SOC
Efficiency	99%
Self Discharge	<3% per Month
Maximum Modules in Series	4

DISCHARGE SPECIFICATIONS

Maximum Continuous Discharge Current	100 A
Peak Discharge Current	350A (3s)
BMS Discharge Current Cut-Off	350A (3s)
Recommended Low Voltage Cut-Off	11 V
BMS Discharge Voltage Cut-Off	8 V
Reconnect Voltage	9.2 V
Short Circuit Protection	200-600 μs

TEMPERATURE SPECIFICATIONS

Discharge Temperature	-4 to 140°F (-20 to 60°)
Charge Temperature	-4 to 113°F (-20 to 45°C)
Storage Temperature	23 to 95°F (-5 to 35°C)
BMS High Temperature Cut-Off	149°F (65°C)
Reconnect Temperature	122°F (50°C)



MECHANICAL SPECIFICATIONS

Dimensions (Lx W x H)	12.55 x 6.5 x 9.2"
	318 x 165 x 215 mm
Weight	34.2 lbs (15.5 kg)
Terminal Type	3/8-16 Threaded UNC
Terminal Torque	80 - 100 in-lbs (9 - 11 N-m)
Case Material	ABS
Enclosure Protection	IP56
Cell Type - Chemistry	Prismatic- LiFePO ₄

CHARGE SPECIFICATIONS

Recommended Charge Current	50 A
Maximum Charge Current	100 A
Recommended Charge Voltage	14.2 V - 14.6 V
BMS Charge Voltage Cut-Off	15.2 V
Reconnect Voltage	14.4 V

COMPLIANCE SPECIFICATIONS

Certifications	CE (battery)
	UN38.3 (battery)
	UL1642 & IEC62133 (cells)

FEATURES

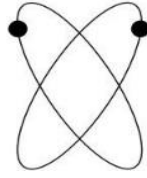
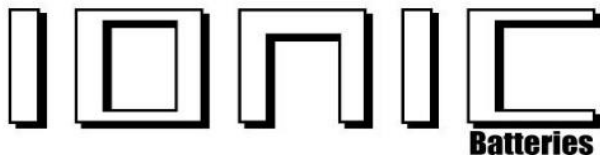
Bluetooth APP



Monitor your battery's vitals straight from your smartphone. ☐

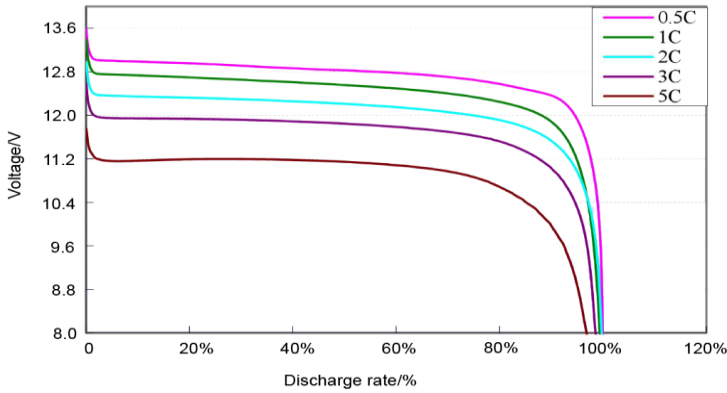
Distributed by: 

lithiumhub.com

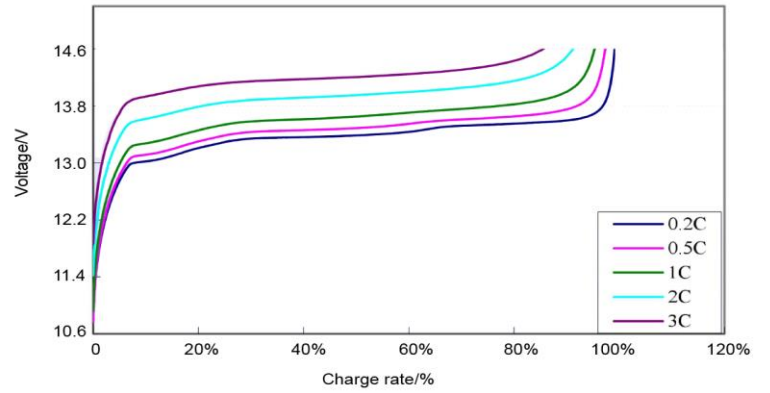


MODEL: IC-12V125-EP4S

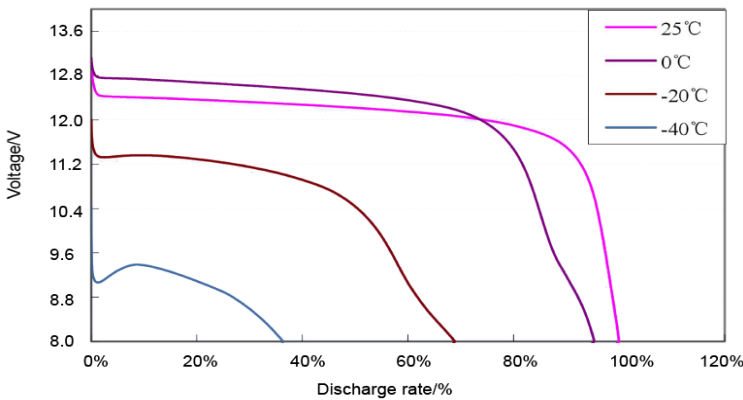
Discharge Characteristics at Various Discharge Rates



Charge Characteristics at Various Rates



Discharge characteristics at Different Temperatures



Cycle Life

