



**MODEL: IC-12V100-EP4S**

## Lithium Ion Deep Cycle Battery

### ELECTRICAL SPECIFICATIONS

Nominal Voltage	12.8 V
Nominal Capacity	100 Ah
Capacity @ 25A	240 min
Energy	1280 Wh
Resistance	≤30 mΩ @50% SOC
Efficiency	99%
Self Discharge	<3% per Month
Maximum Modules in Series	4

### DISCHARGE SPECIFICATIONS

Maximum Continuous Discharge Current	100 A
Peak Discharge Current	350A (3s)
BMS Discharge Current Cut-Off	350A (3s)
Recommended Low Voltage Cut-Off	11 V
BMS Discharge Voltage Cut-Off	8 V
Reconnect Voltage	9.2 V
Short Circuit Protection	200-600 μs

### TEMPERATURE SPECIFICATIONS

Discharge Temperature	-4 to 140°F (-20 to 60°)
Charge Temperature	-4 to 113°F (-20 to 45°C)
Storage Temperature	23 to 95°F (-5 to 35°C)
BMS High Temperature Cut-Off	149°F (65°C)
Reconnect Temperature	122°F (50°C)

### MECHANICAL SPECIFICATIONS

Dimensions (Lx W x H)	12.55 x 6.5 x 9.2" 318 x 165 x 215 mm
Weight	28 lbs (12.7 kg)
Terminal Type	3/8-16 Threaded UNC
Terminal Torque	80 - 100 in-lbs (9 - 11 N-m)
Case Material	ABS
Enclosure Protection	IP56
Cell Type - Chemistry	Prismatic- LiFePO <sub>4</sub>

### CHARGE SPECIFICATIONS

Recommended Charge Current	50 A
Maximum Charge Current	100 A
Recommended Charge Voltage	14.2 V - 14.6 V
BMS Charge Voltage Cut-Off	15.2 V
Reconnect Voltage	14.4 V

### COMPLIANCE SPECIFICATIONS

Certifications	CE (battery) UN38.3 (battery) UL1642 & IEC62133 (cells)
----------------	---

### FEATURES

Bluetooth APP

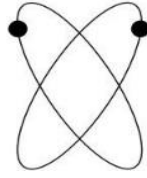


**Monitor your battery's vitals straight from your smartphone.**

Distributed by: 

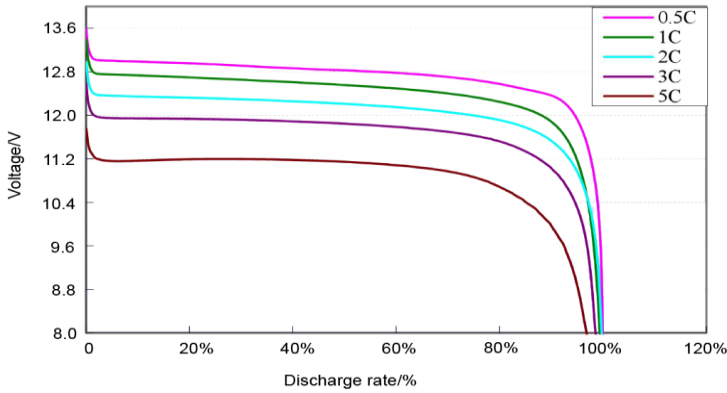
[lithiumhub.com](http://lithiumhub.com)

# IONIC Batteries

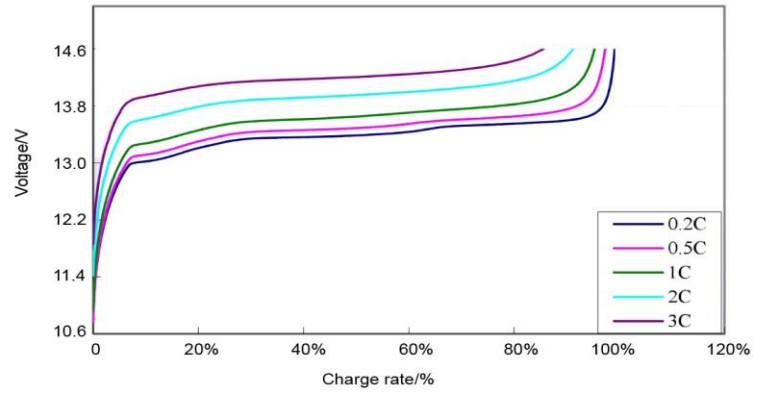


## MODEL: IC-12V100-EP4S

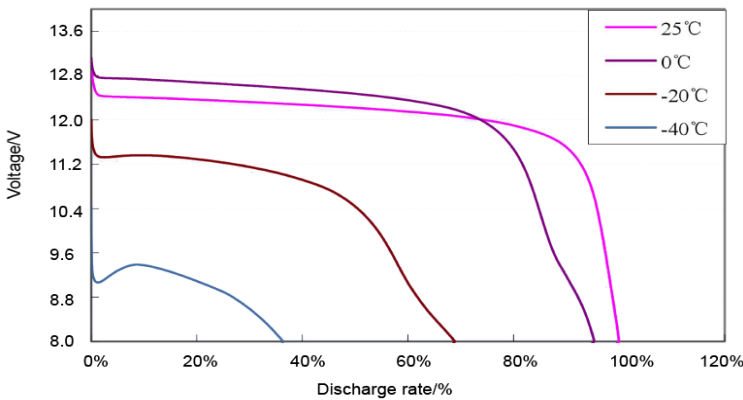
Discharge Characteristics at Various Discharge Rates



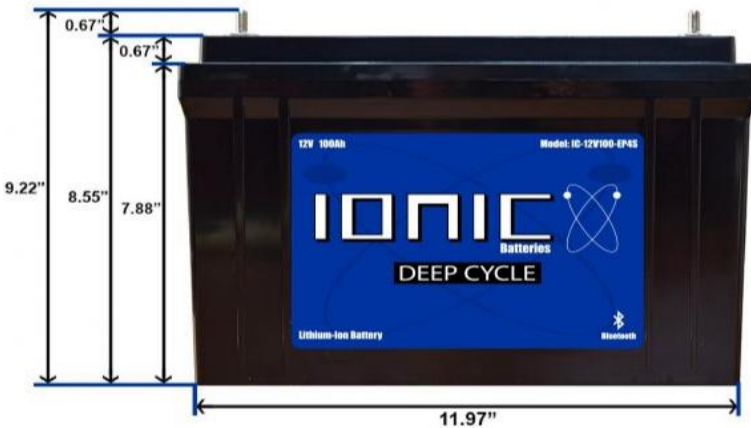
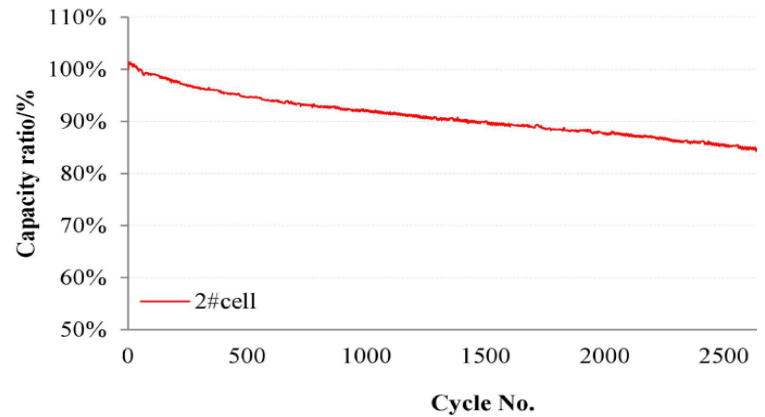
Charge Characteristics at Various Rates



Discharge characteristics at Different Temperatures



Cycle Life



Distributed by: LITHIUM HUB

[lithiumhub.com](http://lithiumhub.com)